

Thank you for choosing ProECU-K. Here you can find a walk through the Program, the screens and functions.

Installation

Just download and install the software package. It's straight forward and easy to install like every other software package.

The Installed will install the Program on your desired location (you can choose during the installation) and will create a "ProECU-K Data" Directory in the Users Documents Directory which holds the Calibrations, Base Maps and Add-Ons (like Sensors, Injector Deadtime Tables, Gearboxes, etc.)

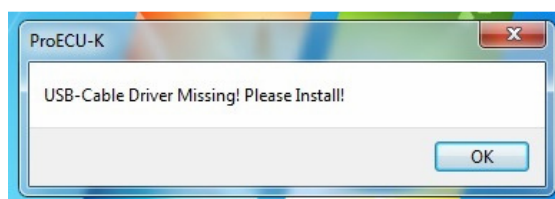
USB-Driver

If your PC running Windows XP you need to install the USB drivers. We use the very popular FTDI Chipset in our product. You can download the USB driver from our site or direct from the chip manufactures site <http://www.ftdichip.com/Drivers/D2XX.htm>.

If your PC is running Windows 7, the drivers are already preinstalled. It could be possible that the driver is not active right now, when you never had a FTDI device connected to the PC. In this case, just connect the USB-Cable and wait for the driver being installed. If this still does not work, follow the instructions of Windows XP (above) and install the FTDI Driver "by hand".

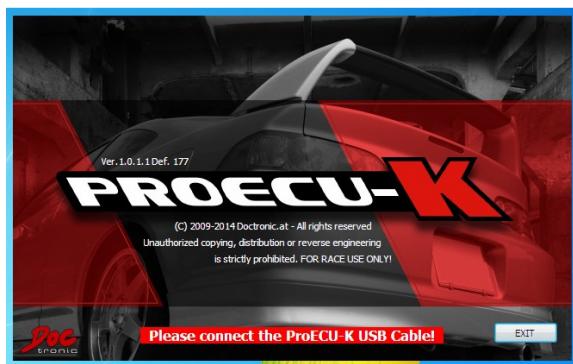
First Start Up

If you start the program the first time, and the following is shown on the screen



Please follow the instructions about the USB-Driver above.

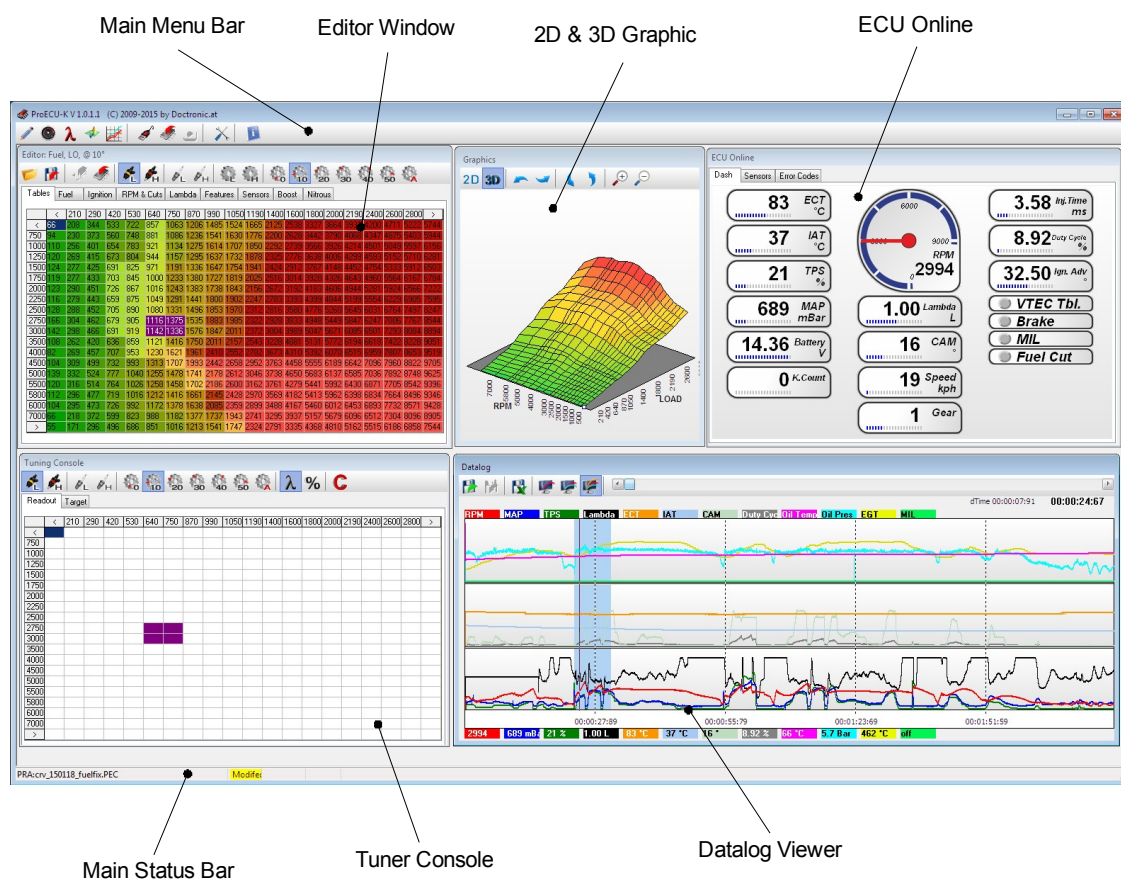
If this screen is shown



Follow the instruction and connect the ProECU-K USB Cable. The cable alone is fine enough, no ECU is needed at this point. This only happens once, at the first start or after installing on a different PC, etc.

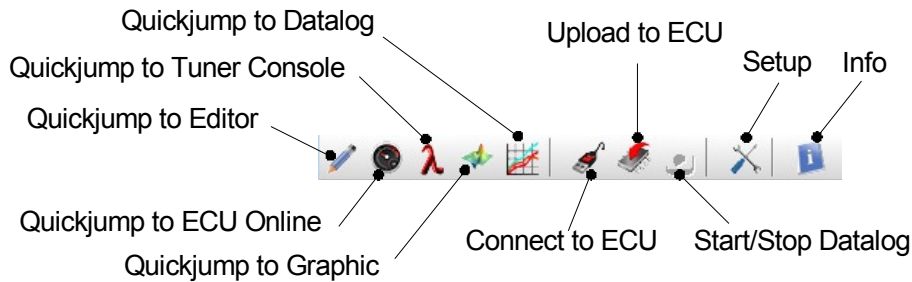
Overview of the Main screen

As you can see, it uses a very simple and clean layout.



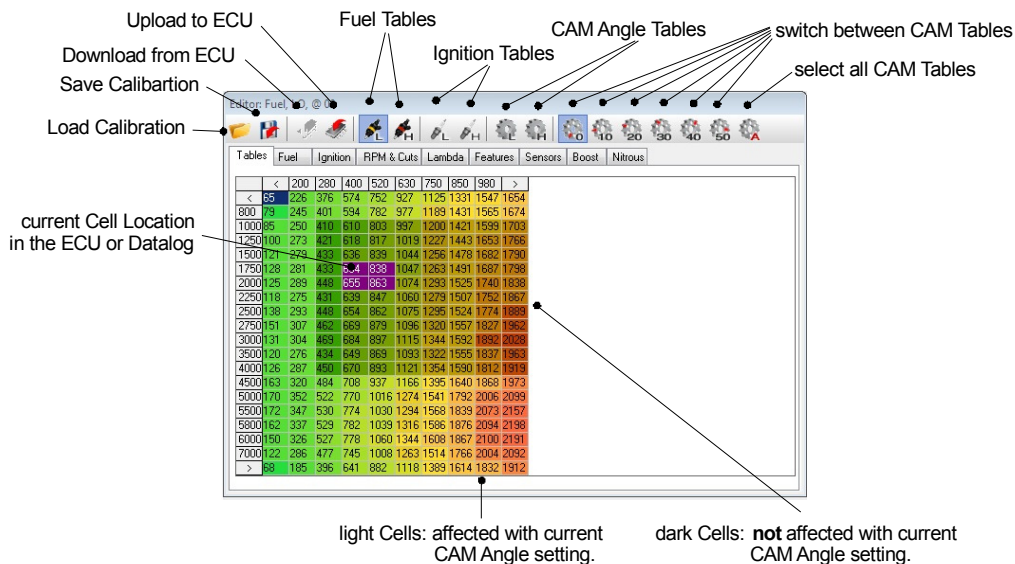
You can move all windows around, which will be necessary on smaller displays. The Graphic and Datalog Viewer are even resizable.

Main Menu Bar



The Quick jump Buttons are helpful when you use overlapping windows to bring the desired window back to front.

Editor Window



Beside of the buttons in the Toolbar you can navigate through the tables with Keyboard shortcuts. Like:

- "F" for fuel Tables,
- "I" for Ignition Tables,
- "C" for Cam Angle Tables,
- "0 .. 5" for the individual Cam Angles,
- "H" for High Cam and
- "L" for the Low Cam of the current Table, ...

To edit the values of the table, just select the cells, right click and enter the desired value (percent, +/-, absolute) to the change window.

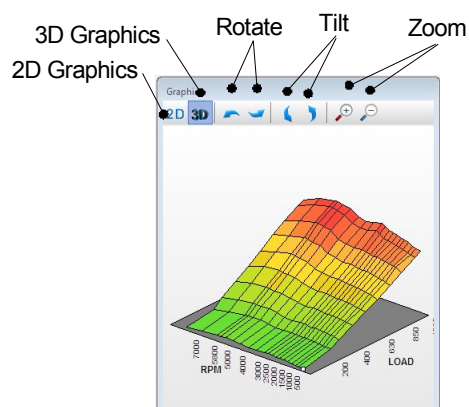
You can hit all the time the F1-Key to popup a help window which contains information's about the current function you use or you can view the keyboard shortcuts.

2D-/3D-Graphic Window

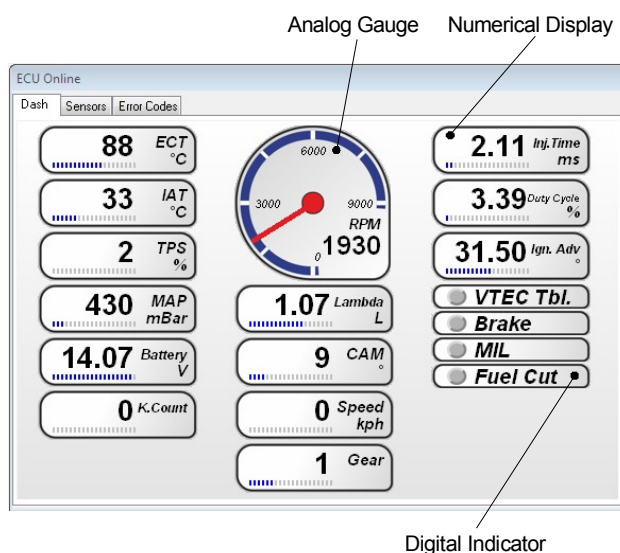
This is a graphical view of your Tables and Data's. You can edit the main tables direct on the graphic view.

In the 2D View, select cells and edit.

In the 3D View, click for the nearest cell and navigate and edit with the cursor keys.



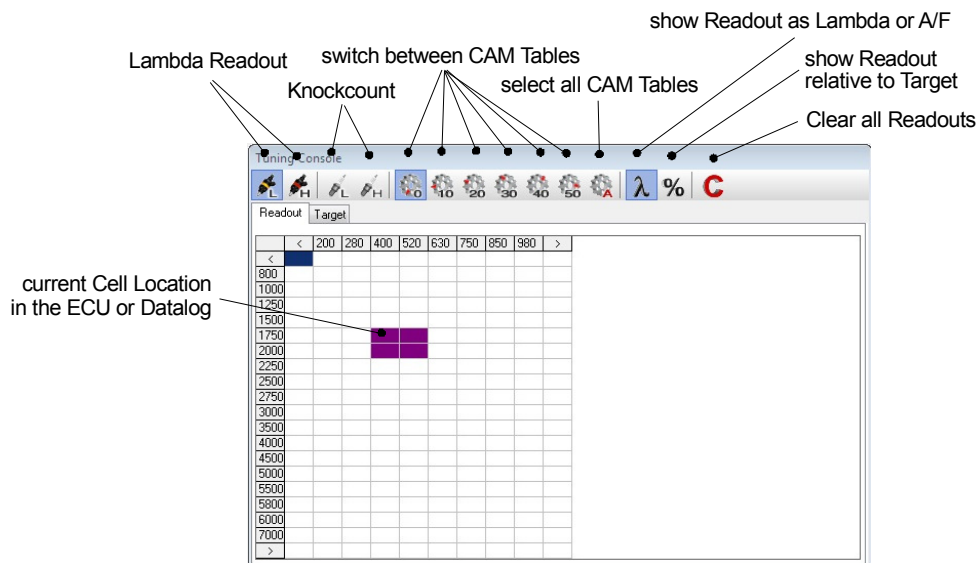
ECU Online



View Engine Data in Real time. You can design the Dashboard yourself. Just right click and add Gauges, Display, etc. set the desired Channel done.

On the Sensor Tab you can see all the Channels in a tabular view. On the Error Codes Tab you can see and reset the current CEL Codes and check and set the Readiness Codes.

Tuner Console

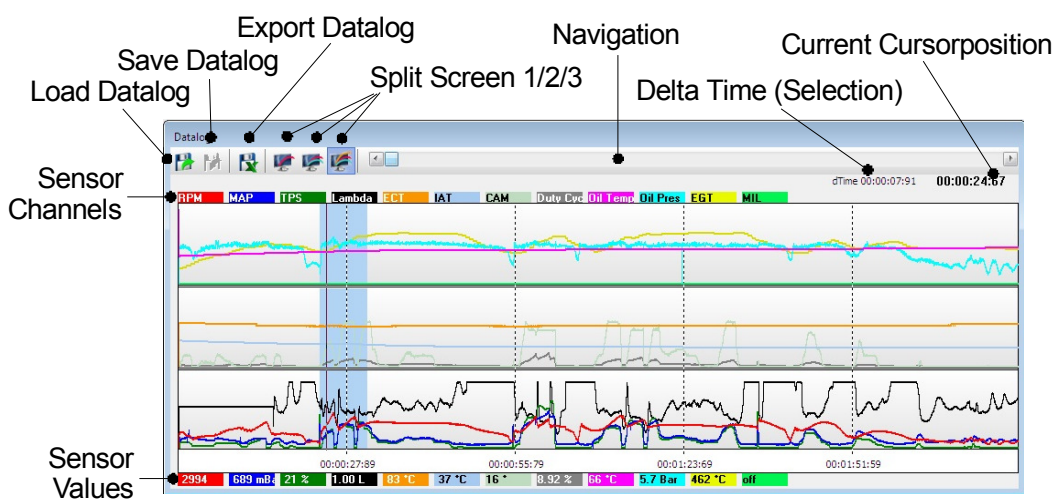


This window will help you a lot to tune the engine. In the Lambda Readout the table logs the current Lambda value at the cell where the ECU currently operates. You can view the values as Lambda or A/F or relative to the Targetmap shown in percent.

Beside of Lambdalogging this window also shows you a knockcount logging. The tables will be populated with the numbers of knock occurs on the depending cell.

You can work direct in these tables. Select and change cells. The operation will be executed in the corresponding tables (Fuel, Ignition).

Datalog



This is the graphical Datalog viewer. A total of 12 Sensors can be displayed at a time. To select the channel just click right on the channels tabs and select a channel. To move the cursor, move the mouse over the graphic holding the left button. When moving the mouse over the sensor values the max and min Peak values will be displayed with its position in the datalog. To select move the cursor with the right mouse button down over the graphic.

Our *SMART-Select* function let you select the cells in the tables used in the selected part of the datalog.

Keyboard Shortcuts

General:

[F1] Show Quickhelp

Table Control:

[F] switch to Fuel Tables
[I] switch to Ignition Tables
[C] switch to Cam Angle Tables
[T] switch to Knock Threshold Tables
[K] switch to Knock Limit Tables
[R] switch to Knock Retard Tables
[0..5] switch between Cam Angles 0..50 deg

Editing:

[CTRL]+[UP] big change +
[CTRL]+[DOWN] big change -
[ALT]+[UP] small change +
[ALT]+[DOWN] small change -

Advanced Editing:

[ALT]+[H] Interpolate Horizontal
[ALT]+[V] Interpolate Vertical
[ALT]+[U] Upload to ECU

General Editing:

[CTRL]+[A] Select all
[CTRL]+[C] copy
[CTRL]+[V] paste
[CTRL]+[Z] undo